



PROPOSALS FOR LAND EAST OF HORNDEAN

WELCOME

Thank you for attending today.

This exhibition is being presented on behalf of Highwood Land Horndean (Limited), Banner Homes (Southern) Limited and the Borrow Foundation who together control land as shown on the aerial photograph opposite, which we refer to as 'Land East of Horndean'.

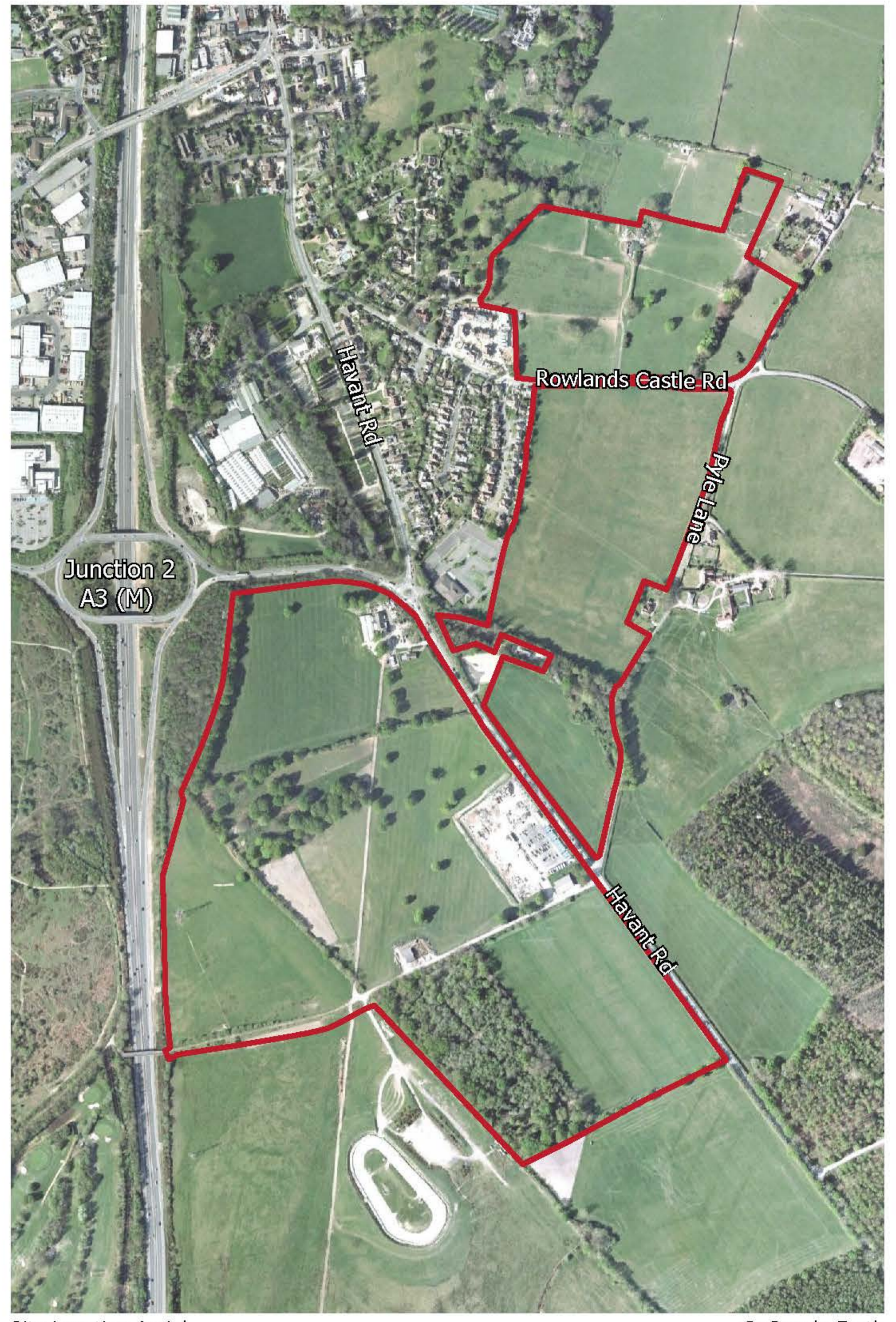
As you may be aware from East Hampshire District Council's recent public consultation event, 'Land East of Horndean' is one of a number of sites within and surrounding the settlement of Horndean that have been promoted by developers and agents for housing to address a requirement of "a minimum of 700 dwellings" in the emerging Local Plan: Joint Core Strategy.

It is in this context that we have brought forward our initial proposals for a comprehensive development which delivers 700 dwellings together with elderly persons accommodation, employment opportunities, playing fields, allotments and other community facilities.

The purpose of this exhibition is to offer you, as a local resident, the opportunity to comment on and influence our proposals for the site, and to provide us with a clearer idea of what facilities are needed in the local area.

With this in mind we have representatives of the respective landowners and members of the project team on hand to answer any of your questions and we would encourage you to approach us to discuss the proposals.

We would encourage you to put your thoughts across to us having viewed the exhibition today and spoken with the team – a short questionnaire and general feedback form is provided to help us gather as much information as possible.



Site Location Aerial

© Google Earth

